

# North Monterey County Unified School District

---

Campus Image & Identity – Progress Update  
Presentation  
Board of Trustees  
June 23, 2022





# Agenda

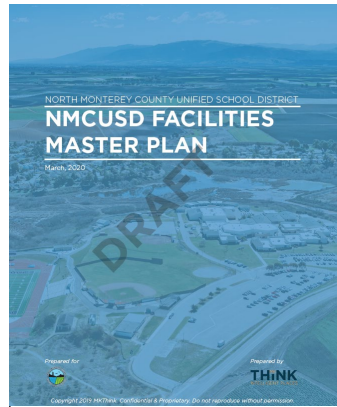
- 1 Context
- 2 Scope & Schedule
- 3 Campus Concepts (Cohort 1)
- 4 Next Steps

# Where we are

“What near term initiatives can we develop to help us improve the image, identity and flow of our existing campuses while paving the way for longer term capital improvements?”







- 1 Gather data, conduct field visits, review benchmarks
- 2 Gather input and ideas from staff about opportunities
- 3 Develop a conceptual vision for each campus to improve campus experience
- 4 Develop a tactical framework for prioritizing projects
- 5 Integrate direction within Facilities Master Plan and Education Specifications
- 6 Identify focus areas for near term implementation

# Where We Are



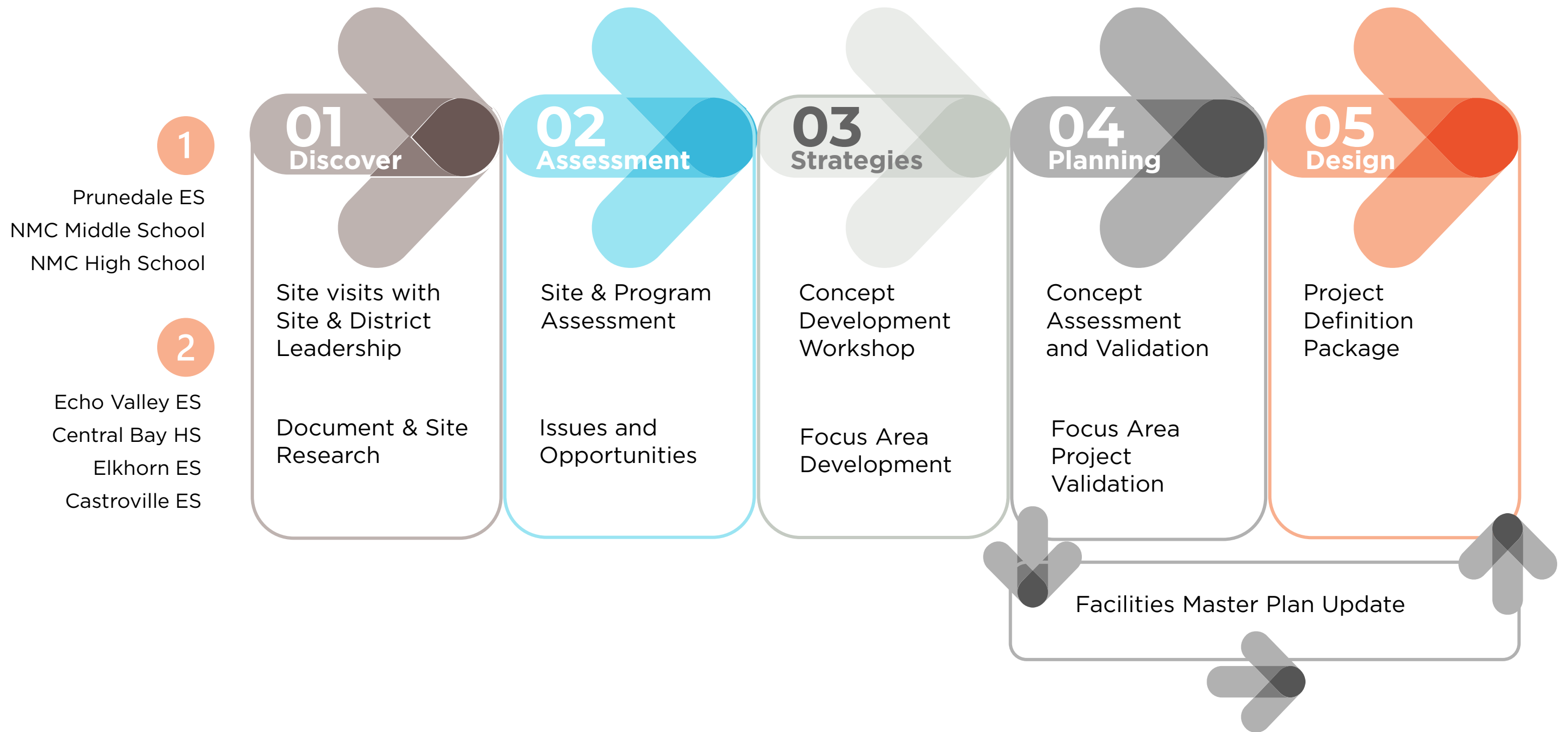


# Our Guiding Principles

<h2>Active Learning</h2> 	<h2>Indoor &amp; Outdoor Spaces</h2> 	<h2>Safe &amp; Inviting</h2> 	<h2>Image &amp; Identity</h2> 	<h2>Health &amp; Wellness</h2> 	<h2>Financial Health</h2> 
<ul style="list-style-type: none"> <li>• Arts integration</li> <li>• Flexible classrooms</li> <li>• STEAM</li> <li>• Outdoor exploration and nature play</li> </ul>	<ul style="list-style-type: none"> <li>• Link indoor &amp; outdoor spaces</li> <li>• Multipurpose Spaces</li> <li>• Outdoor STEAM labs</li> <li>• Outdoor performance</li> </ul>	<ul style="list-style-type: none"> <li>• School Spirit</li> <li>• Cultural Diversity &amp; Inclusion</li> <li>• 'Big Hug'</li> <li>• Visible Learning</li> </ul>	<ul style="list-style-type: none"> <li>• Arrival and Wayfinding</li> <li>• Curb Appeal</li> <li>• Student and Staff Experience</li> </ul>	<ul style="list-style-type: none"> <li>• Outdoor Learning</li> <li>• Health and wellness facilities</li> <li>• Athletic Facilities</li> </ul>	<ul style="list-style-type: none"> <li>• Energy efficient operations</li> <li>• Revenue Generation</li> <li>• Low cost of Ownership and operation</li> </ul>



# Our Process





# Prunedale Elementary School: Opportunities



"Most people don't even know there's a school here"

"front door to the campus is confusing"

"move storage sheds out of the way of flow"

"art gardens, murals, and art walkways!"

"outdoor spaces can be better used for learning if shaded + close to classroom"

So many hidden nooks and crannies; improve edges

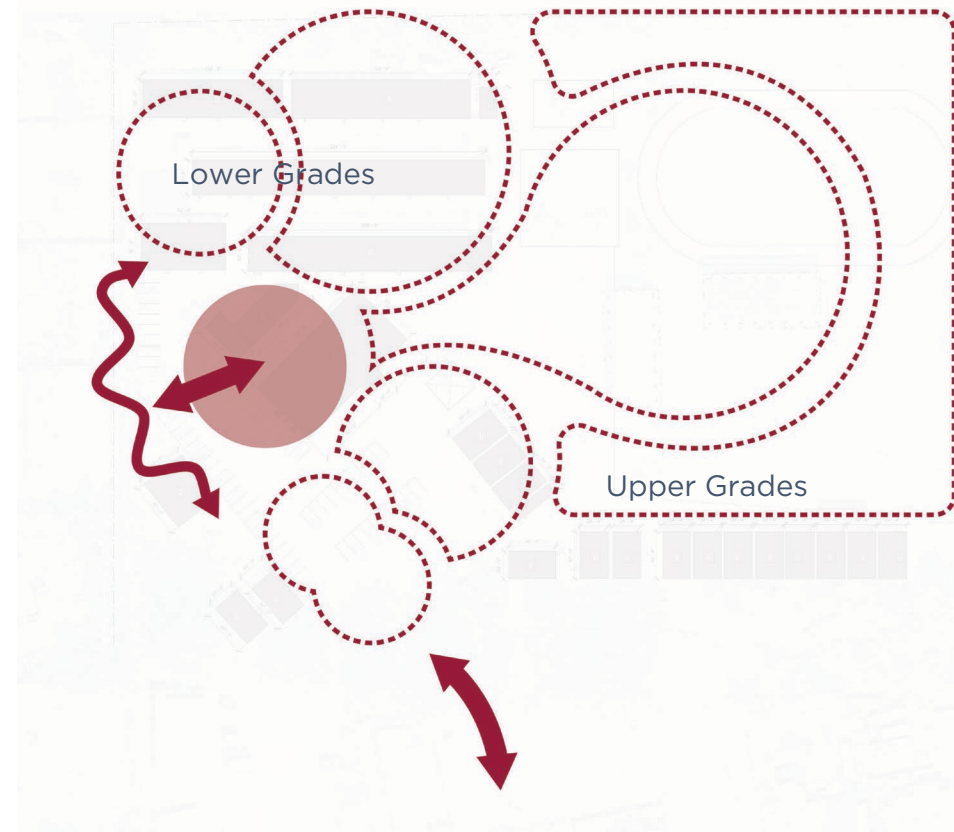
"we need sensory pathways and exploration zones"

We can take better advantage of nature for learning & play

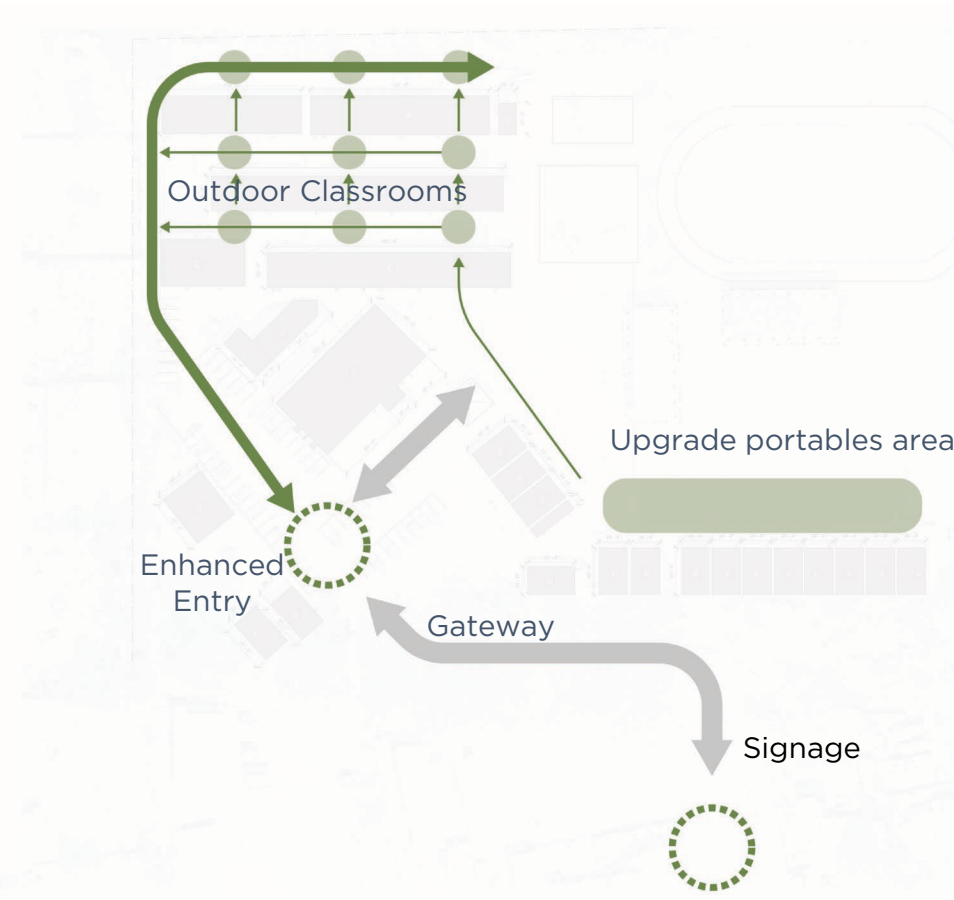


# Prunedale Elementary School: Opportunities

**Cohere** Enhance entry experience and create a 'there there' on campus



**Connect** key indoor and outdoor spaces with intentional nodes and pathways



**Activate** outdoor spaces with programs



- 1 Enhance entry experience and school gateway
- 2 Use STEAM as an organizing principle
- 3 Create zones themed by program
- 4 Anchor open spaces with key programs and allocate activities based on themes

- 1 Create a more intuitive and ceremonious campus entry
- 2 Open-up visual and functional corridors between indoor spaces and outdoors
- 3 Get rid of low value obstructions to flow and outdoor learning
- 4 'Graduate' the student experience; create an anchor place for each age group

- 1 Showcase and display artwork throughout campus
- 2 Provide small, manipulatable elements for natural play and discovery
- 3 Locate outdoor classrooms directly outside classrooms
- 4 Reveal natural ecosystems across campus; gradually introduce eco-friendly paving, water management, and natural shading



# Prunedale Elementary School: Concept Plan





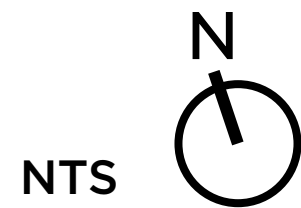
# Prunedale Elementary: Northwest Quadrant



- ① Outdoor Discovery
- ② Bio Swale
- ③ Active Play
- ④ Family & Play
- ⑤ Security Gate



# Prunedale Elementary: Southeast Quadrant



- ① Main Entrance
- ② Community Entrance
- ③ (N) Cohort Quad



# NMC Middle School: Opportunities



"there's no place for kids to be in between classes "

"the space outside the modulars is underused!"

"courtyards are sometimes used for learning"

Staff and guest parking is a big issue

"why is the front of campus all about cars and buses"

"Lots of underutilized outdoor space"

"The front door of campus looks sterile"

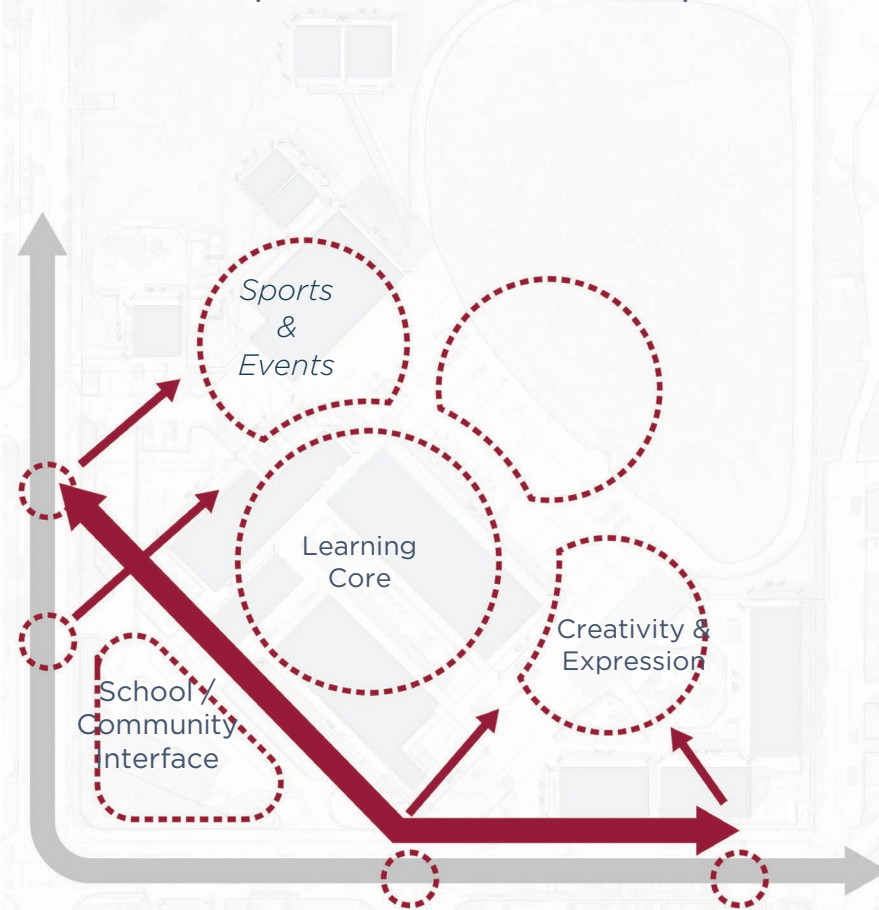
"fixing the gym is a priority ....Buena Vista and the HS could play here"

"we want this school to be welcoming to the community"



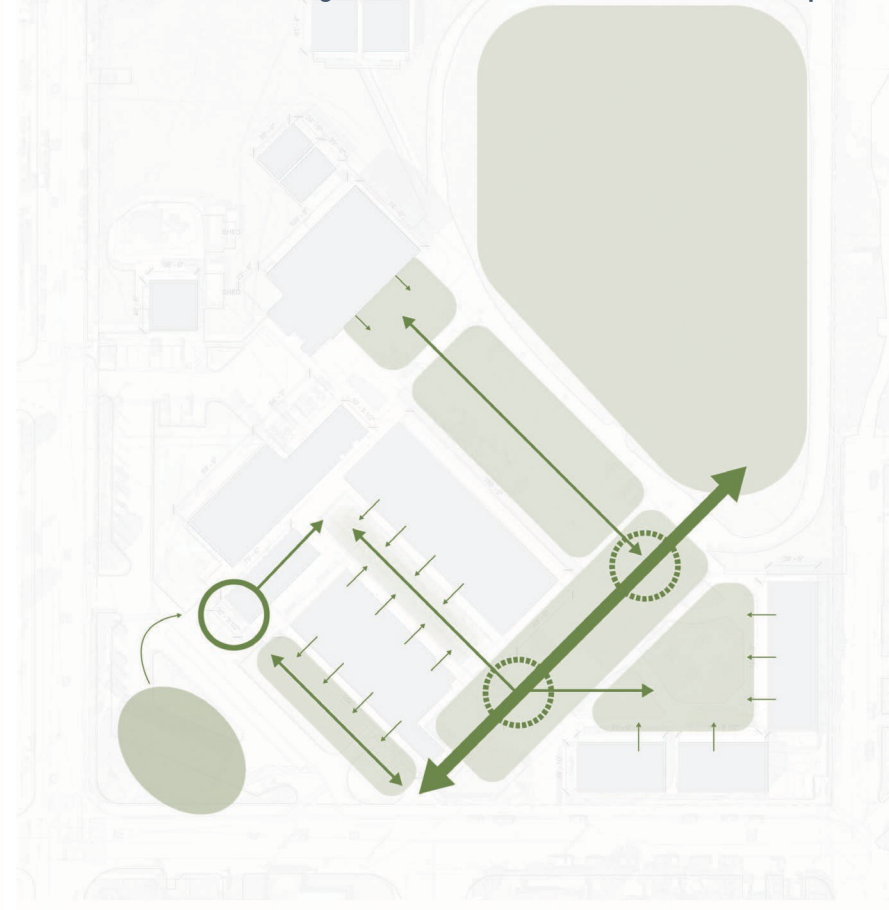
# NMC Middle School: School as Center of Community

## Cohere campus entries and campus flow



- 1 Create a pedestrian community interface at school entry
- 2 Create events zone around gym to facilitate partnerships and community events
- 3 Strengthen campus heart with new zones for expression and creativity

## Connect key indoor and outdoor spaces



- 1 Create an intuitive system of open spaces and pathways anchored by core programs
- 2 Create transparency between indoor and adjacent outdoor spaces to promote use and flow

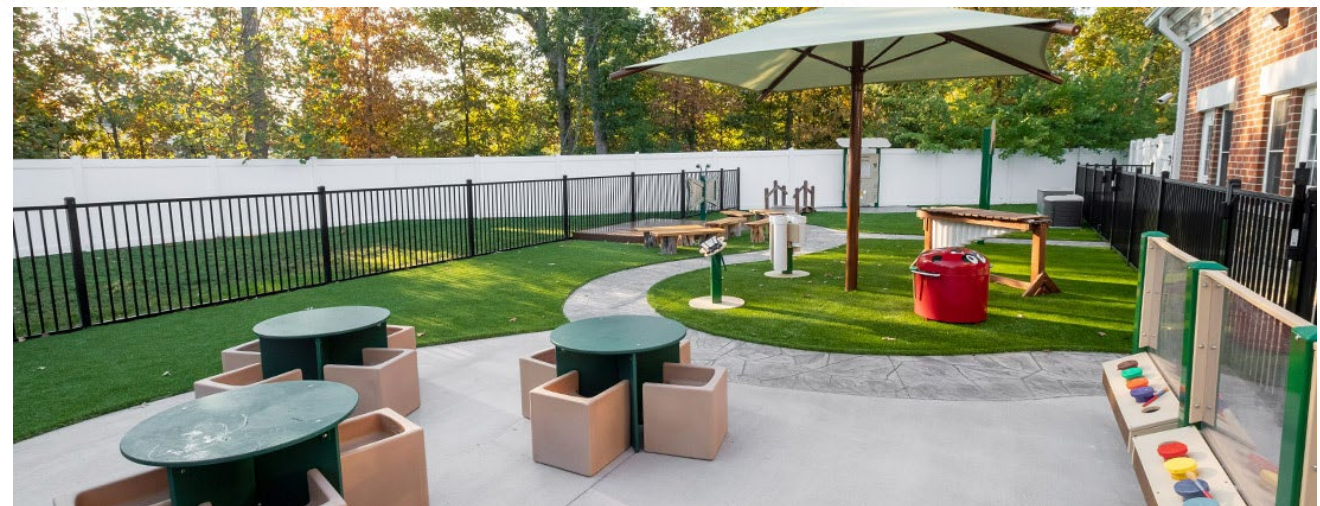
## Activate outdoor spaces w/ programs and art



- 1 Provide outdoor classrooms with key tools for outdoor learning and collaboration
- 2 Showcase student art and community murals along pathways and entry points
- 3 Create intentional outdoor areas for student expression and creativity
- 4 Celebrate learning at community edge with outdoor classrooms

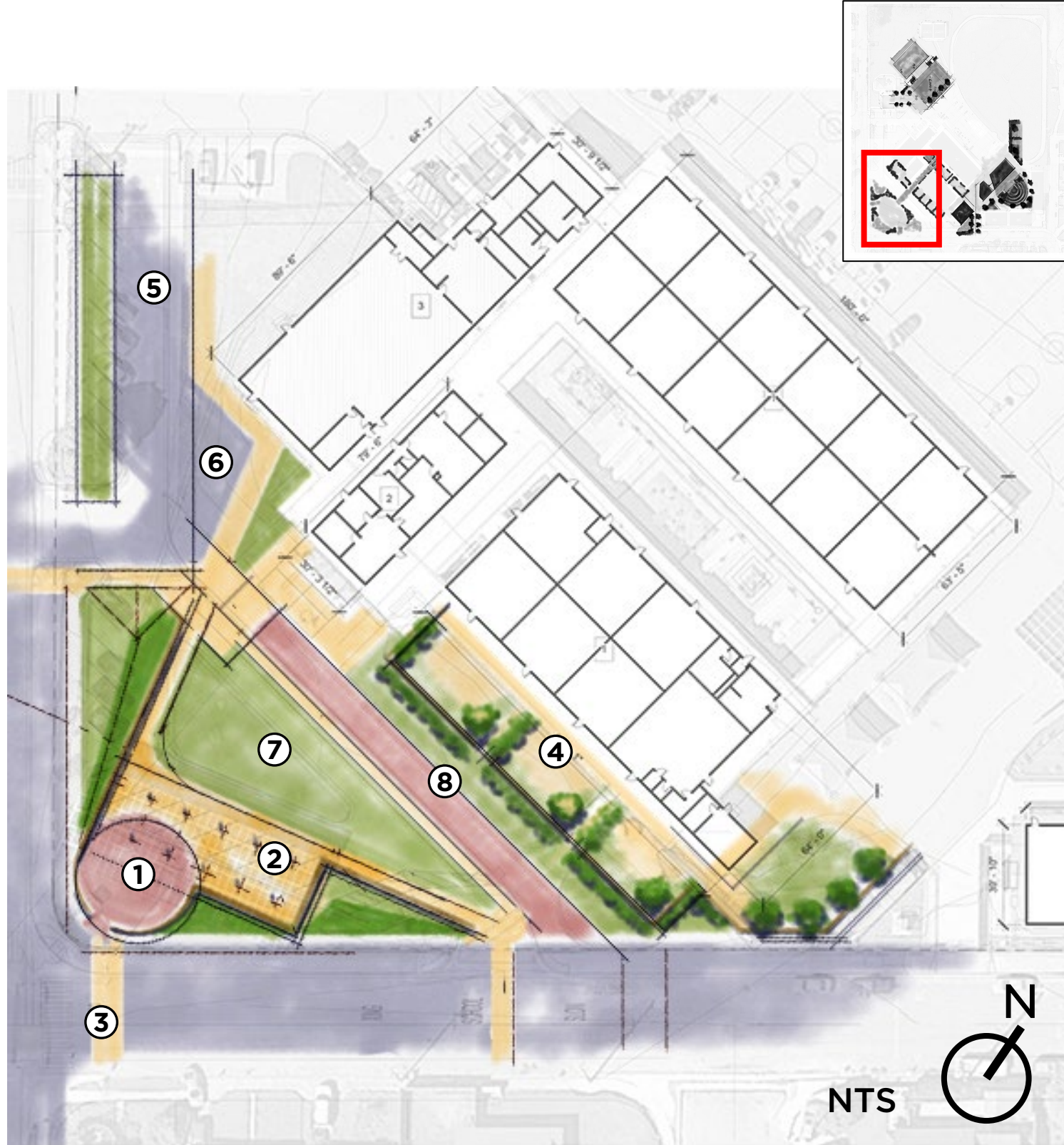


# NMC Middle School: Concept Plan





# NMC Middle School Campus: Southwest Quadrant



- ① Entry Plaza - Partially Covered
- ② Covered Area - Solar Above
- ③ Cross walk
- ④ Outdoor Classroom
- ⑤ Bus Drop Off
- ⑥ Car Parking - Diagonal
- ⑦ Community Lawn
- ⑧ Fire Lane - Aux Bus Parking



# NMC Middle School: Northwest Quadrant



- ① Outdoor Recreation
- ② Playground
- ③ (N) Building
- ④ Entry Plaza
- ⑤ Car Parking

## Head Start - MCOE

- Ⓐ Car Parking
- Ⓑ Playground
- Ⓒ (N) Building



# NMC High School: Opportunities



"unite the campus around STEAM"

"Need space for Health & Wellness – not just for athletes"

"Hard to navigate the campus or see what's happening inside"

"We need to re-think our CTE spaces"

"There are amazing things happening on campus, we need to show them!"

So many hidden nooks and crannies; improve edges

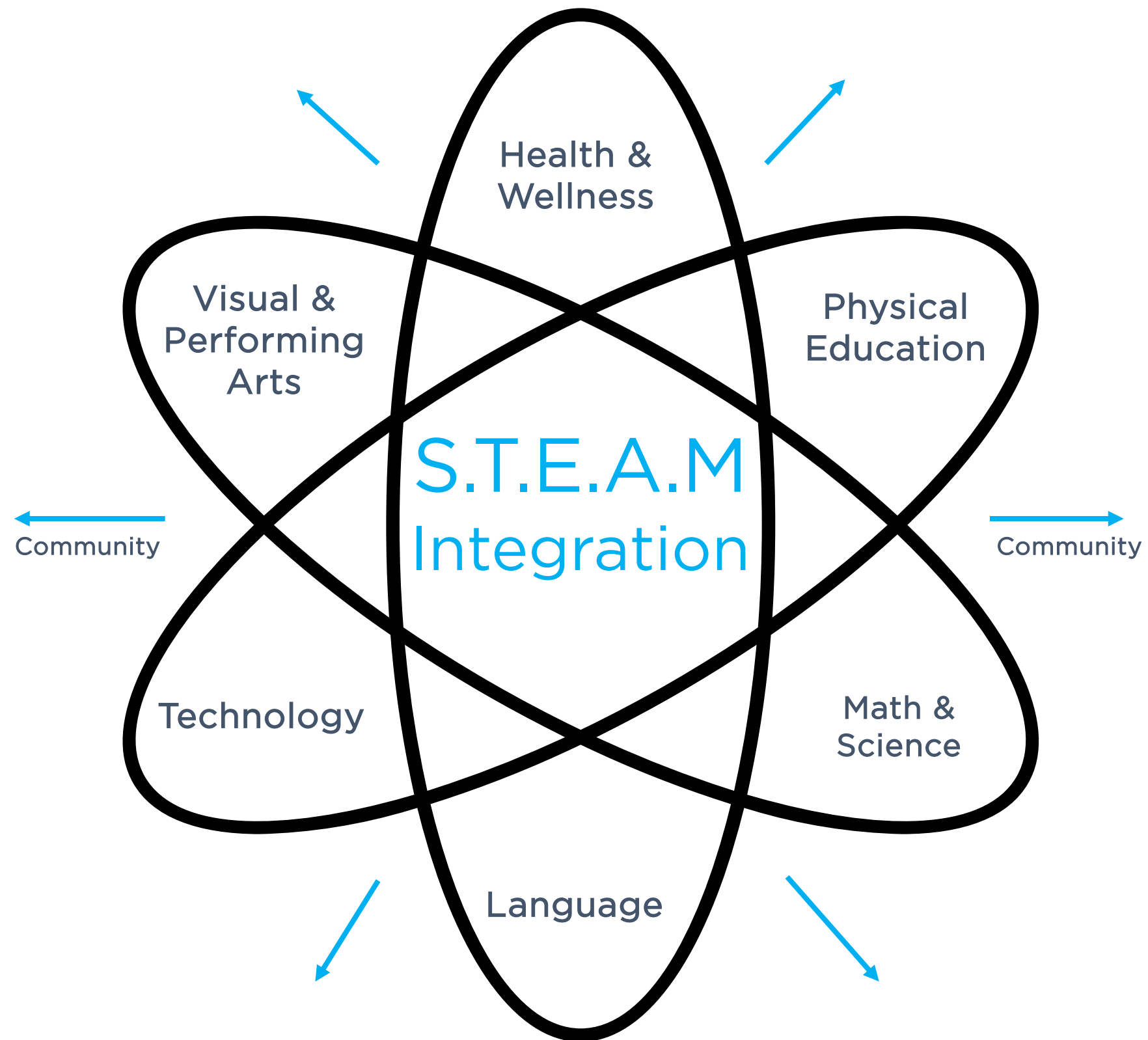
"we need sensory pathways and exploration zones"

Need places for performing

Extend learning outside



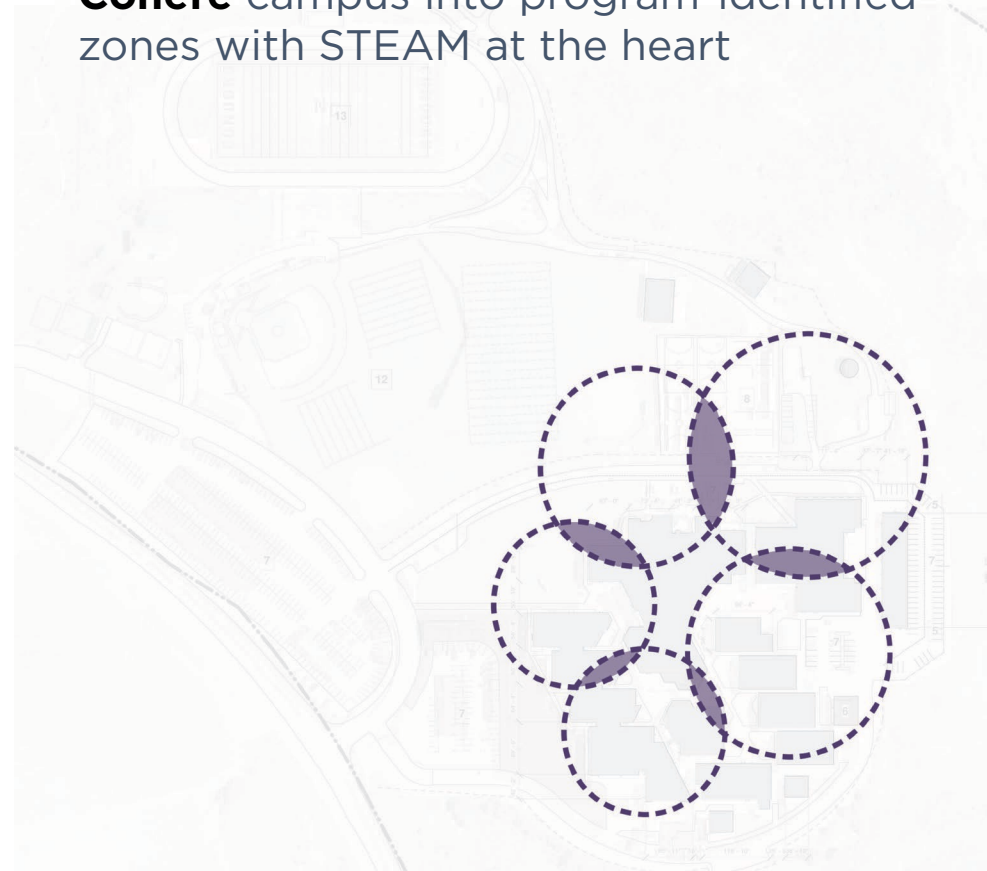
# Campus Integration through STEAM



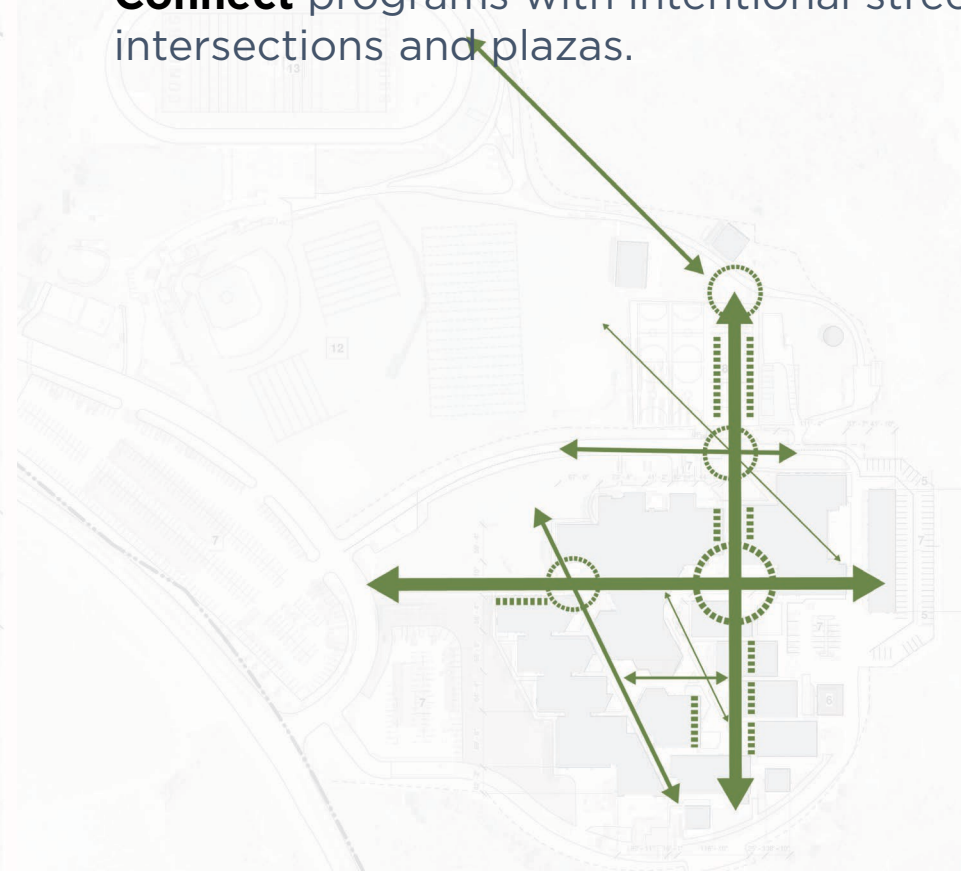


# NMC High School: Integrating Learning Communities

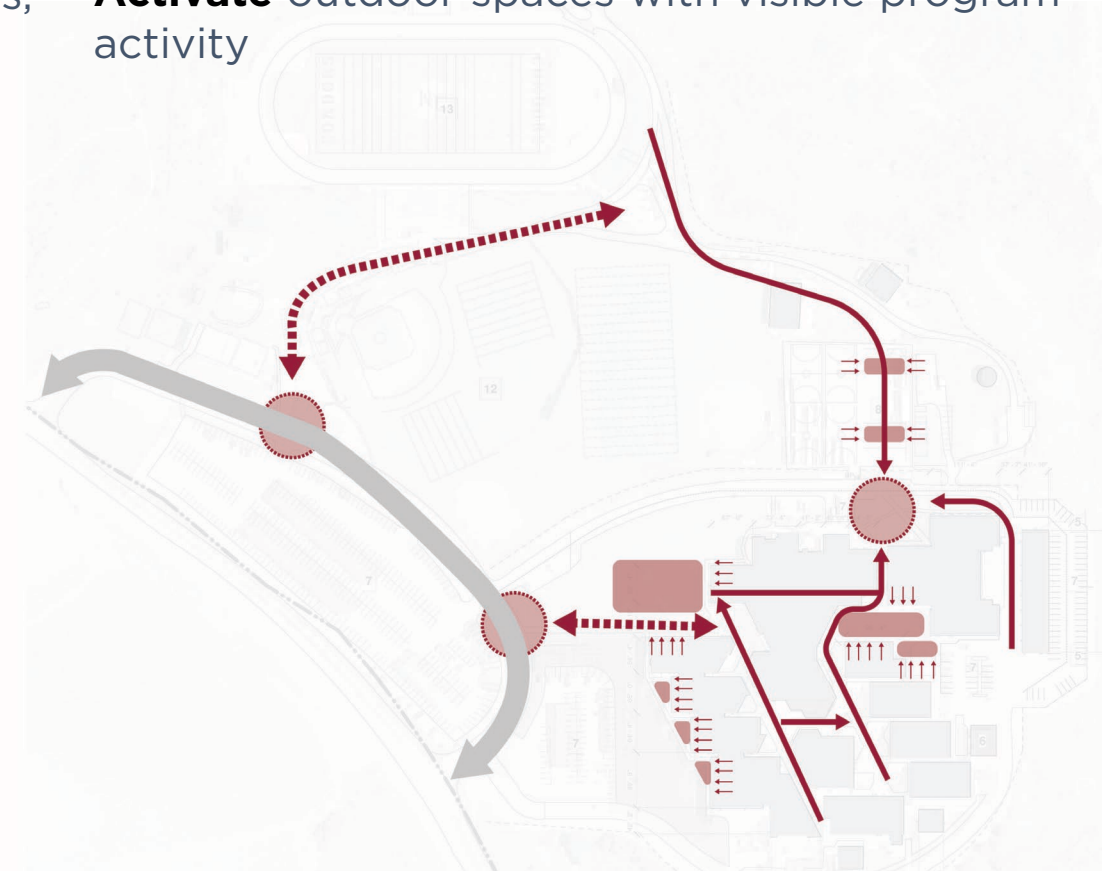
**Cohere** campus into program-identified zones with STEAM at the heart



**Connect** programs with intentional streets, intersections and plazas.



**Activate** outdoor spaces with visible program activity



- 1 Use STEAM as an organizing principle to the campus
- 2 Create zones themed by program
- 3 Anchor open spaces with key programs and allocate activities based on themes

- 1 Creating a hierarchy of Main-streets activated by transparency of internal program
- 2 Improve connectivity along the east-west and north south axes of the campus
- 3 Connect main campus to athletics zones with health and wellness programs and spaces

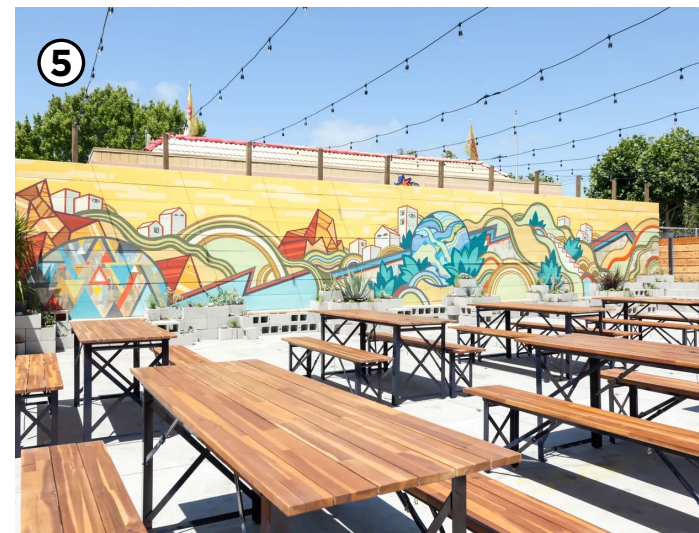
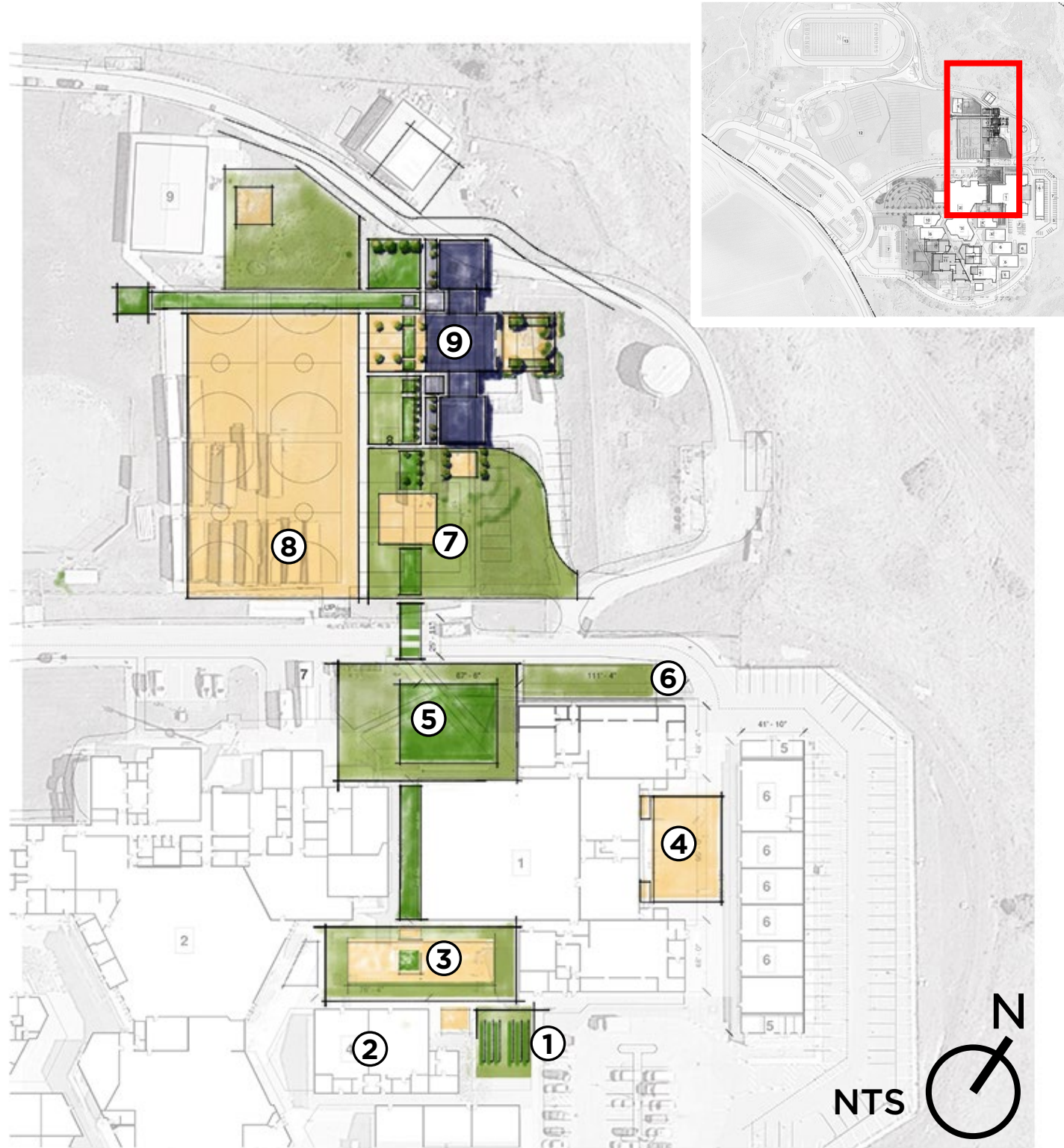
- 1 Bring visible programs into the arrival sequence
- 2 Showcase and display programmatic activity along key spines and open spaces







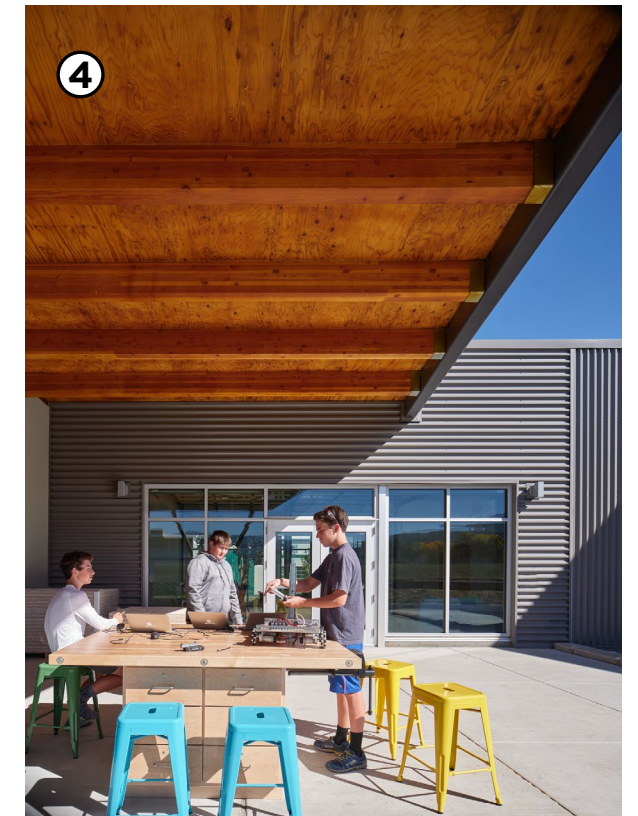
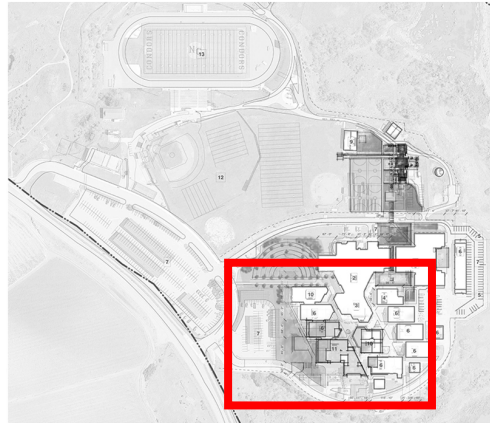
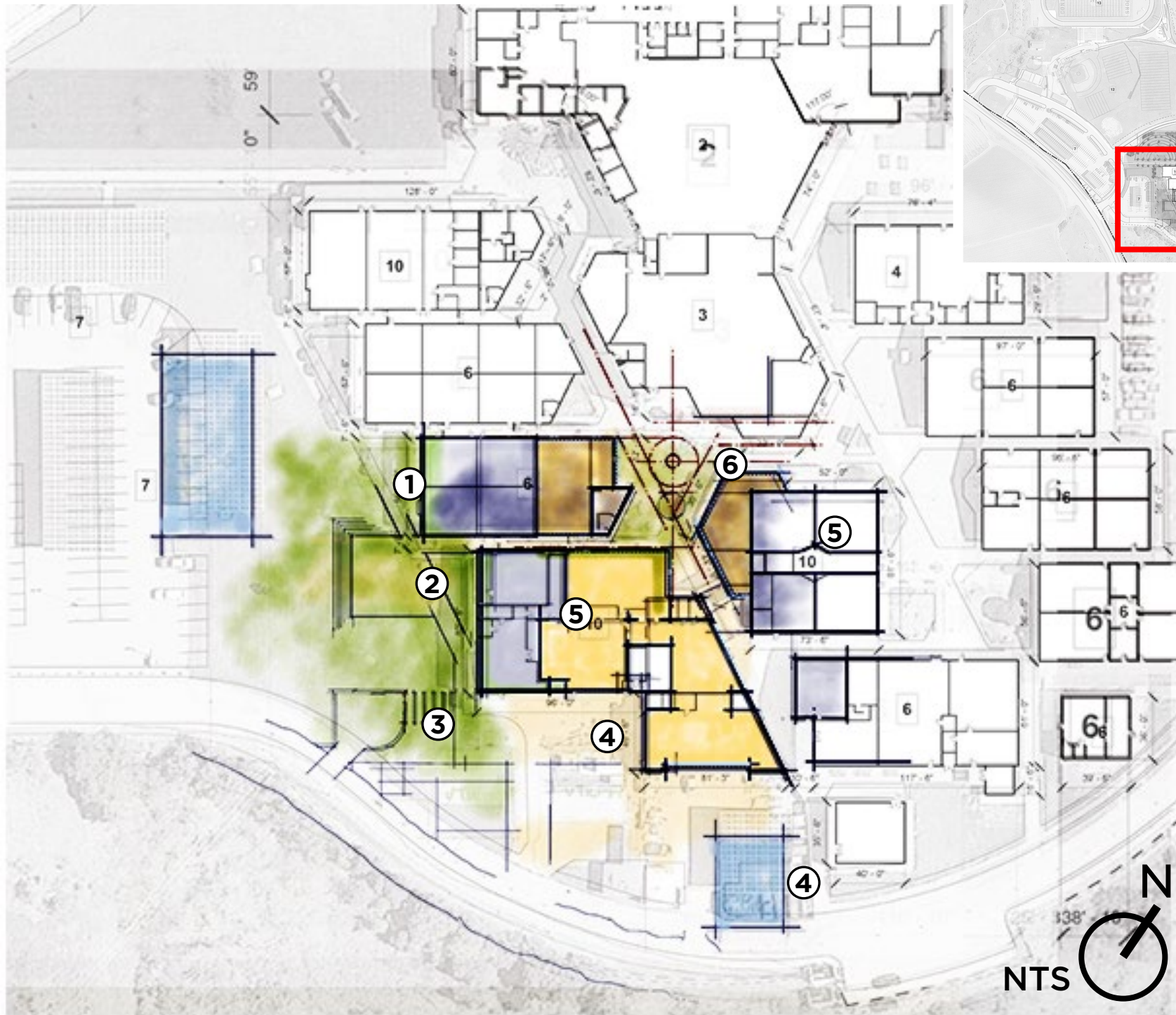
# High School: Northeast Quadrant



- ① (N) Garden
- ② (E) Food Science - Indoors
- ③ (N) Food Science - Outdoors
- ④ (N) Gym - Outdoors
- ⑤ (N) Community Space
- ⑥ (N) Hygiene - Outdoors
- ⑦ (N) Fitness - Outdoors
- ⑧ (E) Fitness - Outdoors
- ⑨ (N) Health Center



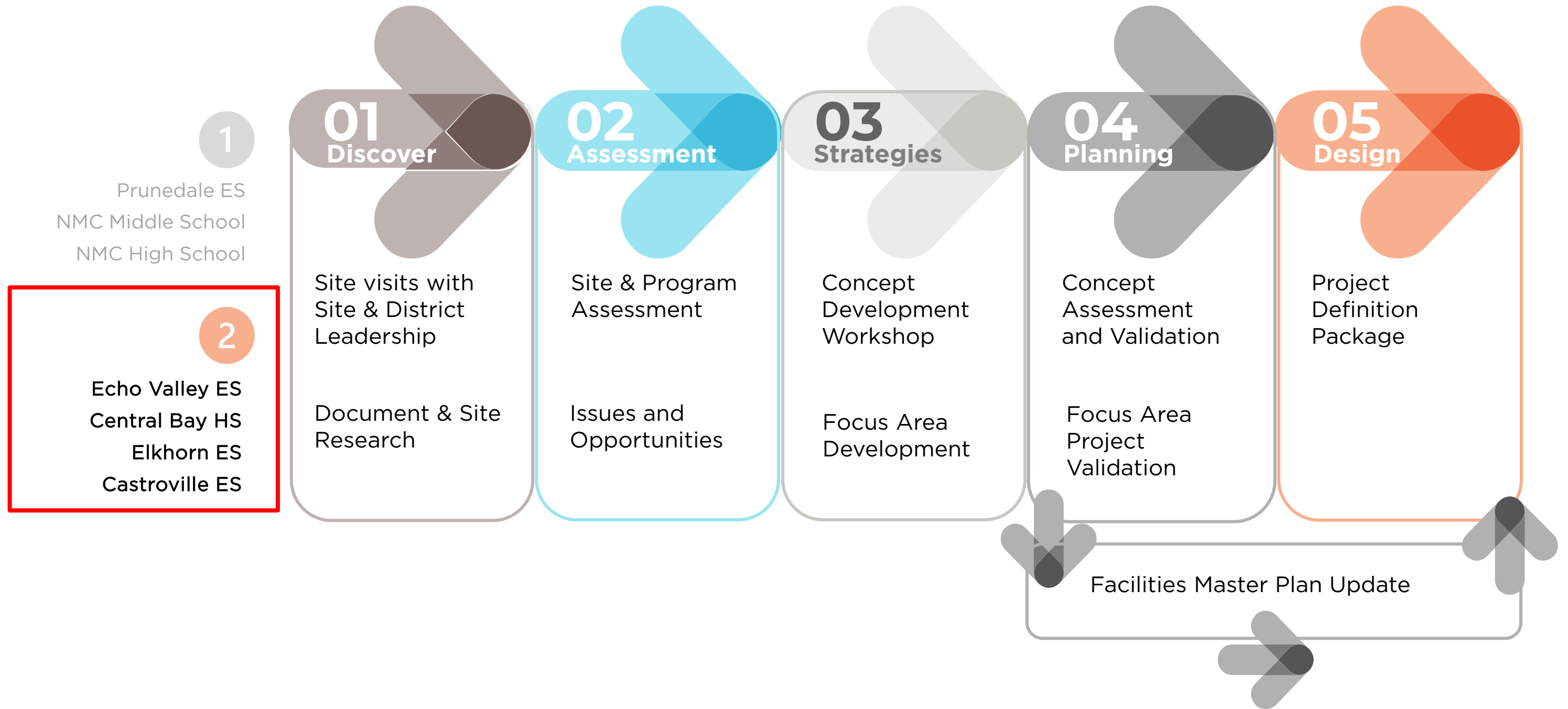
# High School: Southwest Quadrant



- ① Outdoor Education
- ② Maker Landscape
- ③ Product Platform
- ④ Maker yard
- ⑤ Classroom
- ⑥ CTE Studios



# NEXT STEPS



- Summer 2022 projects
- Fall Masterplan Integration & Update



# THANK YOU

---

*For questions, please reach out to:  
Marijke Smit  
[smit@mkthink.com](mailto:smit@mkthink.com)*



**THiNK**<sup>MK</sup>  
INTELLIGENT PLACES